

Petition against communal bins

Appendix

Photographic evidence of the failure of communal bin system in the Great Western Street Area.

Acceptable Communal Bin Alleyways



Santiago Street area



Kippax St, area

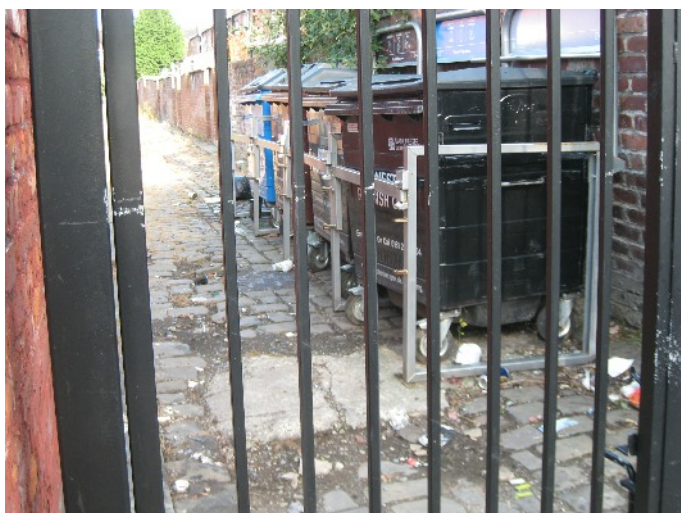


Kippax Street

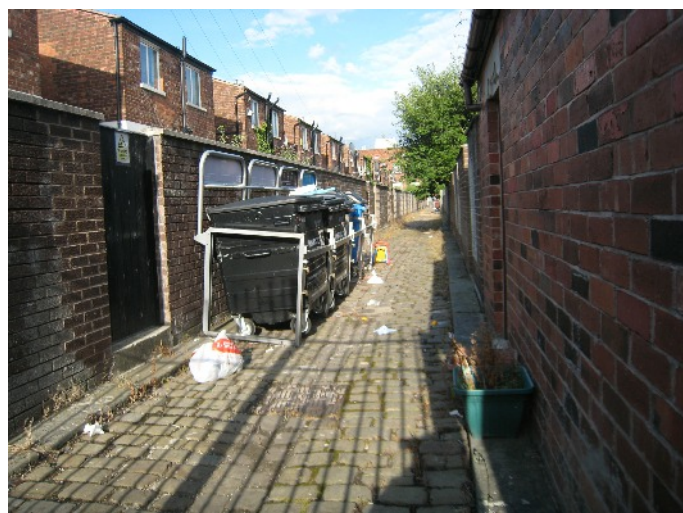


Behind 44 Salisbury

Communal Bin Alleyways with Some Minor Mess



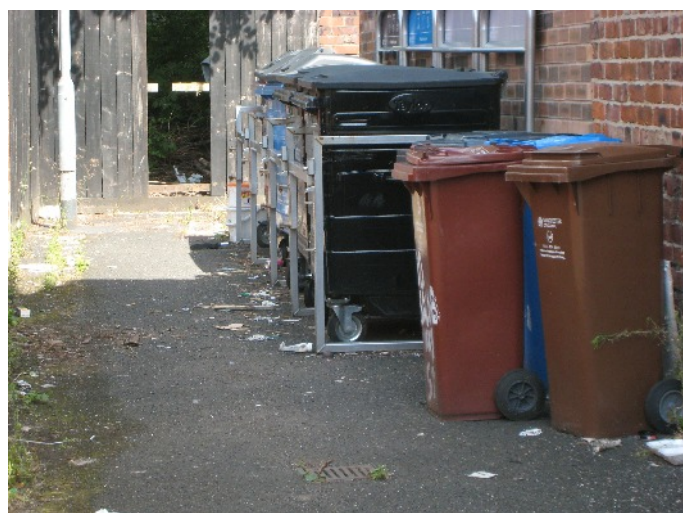
Kippax Street area



Kippax Street Area



By 2 Salisbury Street



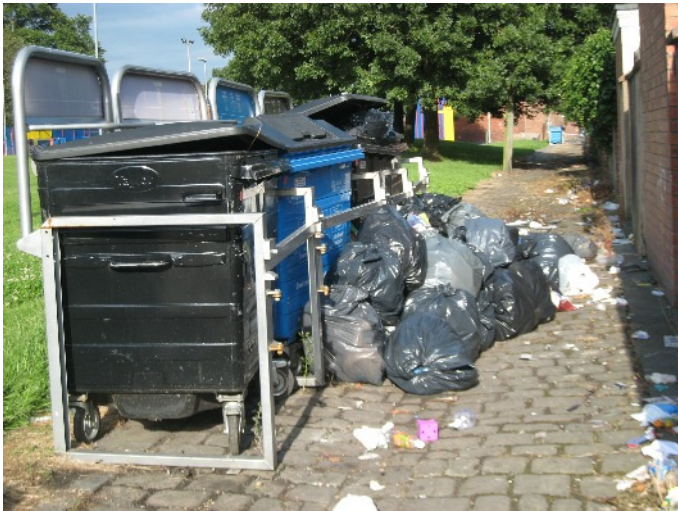
behind 1 Salisbury



2 Cowesby St

Photographs taken between Tuesday 6th and mid-day Wednesday 7th of August

Communal Bin Alleys that were an unacceptable unhygienic, disgusting mess, with lids open due to overflowing rubbish and/or bags of rubbish next to it.



Santiago St. (on a Tuesday)



Santiago St area



Santiago St area

"The wheelie bins were so much better and we want them back, Our back yard stinks and is full of flies. People don't bother to lift the lids."

"WH" Lindum St resident



Kippax St (with more rubbish other side of bins)



Kippax Street

(Unacceptable unhygienic mess continued...)



Along side of 100 Monton St



Behind 44 Albemarle St



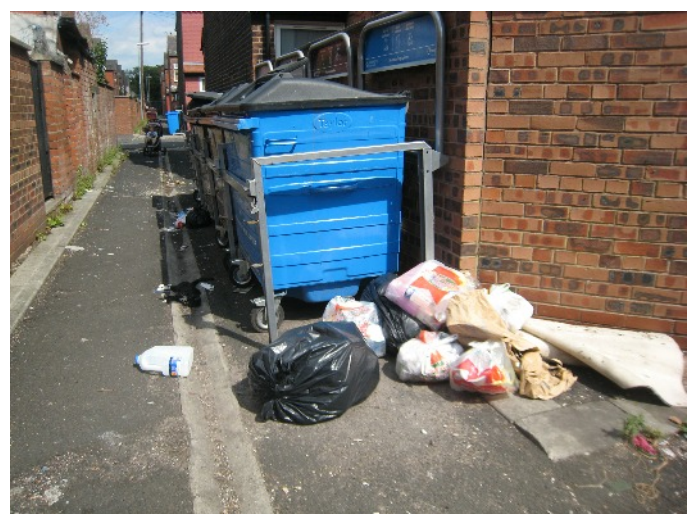
Back of 41 Albemarle St

“By the end of the weekend they are overflowing. My yard is full of rats and flies. I have complained so many times but nothing happens.”

Dorothy, Albemarle St



1 Albemarle St



2 Albemarle St

(Unacceptable, unhygienic mess in communal bin alleys continued....)



Behind 94 Great Western



By 3 Hartington St



Next to 2 Beresford



1 Beresford Street



Back of 37 Beresford

"This system is so much worse than before. We have had no end of problems with the stench, cockroaches, etc. We did a petition begging the council to give us our wheelie bins back because of all the hygiene problems, but they didn't." *"Sylvia," Beresford St.*

(Unacceptable, unhygienic mess in communal bin alleyways continued....)



49 Hartington Street



Cowesby St



Greame Street



Nappies on floor behind Crondall St house



37 Crondall St



85 Broadfield Rd

(Unacceptable, unhygienic mess in communal bin alleyways continued....)



39 Kensington Rd



1 Caythorpe St



2 Kensington St



12 Broadfield Rd

"I can't let the dog in the back yard because when people fling their rubbish up onto the bins, it often comes flying over the wall. The smell is awful, especially in the summer." "L" *Great Western Street.*



41 Tyldesley St

(Unacceptable, unhygienic mess in communal bin alleyways continued....)



Amongst many things jamming the lids open is a toilet cistern next to 1 Cowesby St, showing how anything and everything gets dumped in these bins, leaving less room for genuine household waste.



As with most of these photos, this pile of rubbish next to 2 Rosebery St was just a few feet away from the kitchen window.

(Unacceptable, unhygienic mess in communal bin alleyways continued....)



Santiago St area



35 Hartington St



2 Cadogan St



1 Crondall St

So, of 41 communal bin alleys in the Great Western Street area, 78% were an unhygienic eyesore, that no-one should have to live next to. Meanwhile, at the same time, how were the 13 Haydn/ Ruskin/ Maine/ Acomb/Playfair Street area alleys comparing, with their individual wheelie bins?*

** one alley on Maine Rd left out of study as building work alongside it is inhibiting access*

Individual Wheelie Bin Alleys in Haydn/ Acomb/Maine/ Ruskin/Playfair St Area that were acceptable (small number of bins, all lids down, no bags.)



144-146 Acomb St



Next to 142 Acomb St



Behind 2 Ruskin Ave



Behind 1 Haydn Ave



139 Acomb St



Next to 2 Playfair St

Individual Wheelie Bin Alleys in Haydn/ Acomb/Maine/ Ruskin/Playfair St Area that were acceptable (small number of bins, all lids down, no bags.) Continued....



Next to 8 Maine Rd

Wheelie Bin Alleys in Haydn/ Acomb/ Maine/ Ruskin/ Playfair St area with some minor mess



147-149 Acomb St (lid slightly jammed open)

Unacceptable Mess in Individual Bin Alley *(too many on the pavement, lids opened, bags on floor)*



Behind 2 Haydn Ave



4-6 Playfair Street



8-10 Playfair Street



148-150 Acomb St



151-153 Acomb St.

The pile of rubbish in the background of the photo on the left was cleared up by the landlord the next day after residents contacted him and complained. However, next to communal bins, so much has come from so many houses, and dumping on the floor is the expected norm, that such behaviour is hard to challenge, and all residents can do is wait for the collection day with it piling up around them.

Results

54% of the individual bin alleys were acceptable, compared to just 10% of the communal bin ones.

39% of individual bin alleys were an unhygienic mess compared with 78% of the communal bin alleys. It is evident from the photos that the communal bin alleys were in a far worse state and generally posed a greater threat to health.

However, since it was closer to collection day than with the individual bins (which had been emptied 4 days earlier and are meant to last 2 weeks,) the communal bins were revisited at the weekend to see if they can stay clean for long, (with the excess waste having been collected on Thursday and the general waste having been collected on Friday.)

By Sunday evening, the results for communal bin areas just a few days after collection were shocking:

24 of the 41 communal bins were already overflowing and/or had rubbish collecting around them ***just 2 days after collection***. That's 58%. In comparison, ***9 days after the individual bin collection***, less than a third of those alleys were in a bad state.

Two Days Post Collection: Evidence of Overflowing and/or Rubbish Around Outside of Communal Bins (Great Western Street Area). Sunday 11th August



By 24 Kippax St



Santiago St/Heald Ave



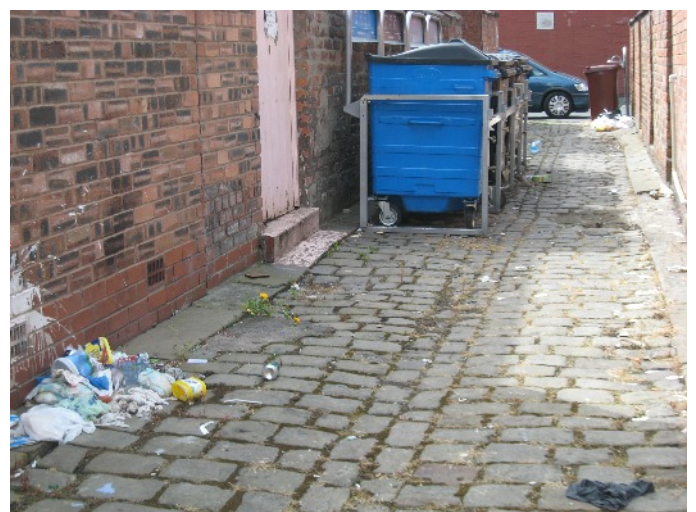
Santiago St/Heald Ave



Santiago St/Lindum St



Santiago St. area



Pile of nappies Santiago/ Newport St.

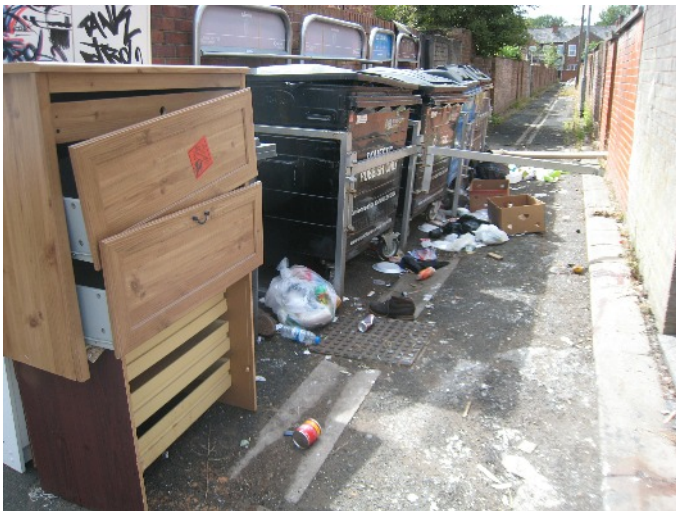
(Two Days Post Collection: Evidence of Overflowing and/or Rubbish Around Outside of Communal Bins (Great Western Street Area). Sunday 11th August, continued...)



98 Monton St.



44 Albemarle St



41 Albemarle St



1 Albemarle St



2 Albemarle St



2 Kensington St

(Two Days Post Collection: Evidence of Overflowing and/or Rubbish Around Outside of Communal Bins (Great Western Street Area). Sunday 11th August, continued...)



1 Crondall St



1 Caythorpe St



1 Cowesby St



1 Rosebery St



2 Beresford St



3 Hartington St

(Two Days Post Collection: Evidence of Overflowing and/or Rubbish Around Outside of Communal Bins (Great Western Street Area). Sunday 11th August, continued...)



35 Hartington St



37 Beresford St



37 Cowesby St



85 Broadfield Rd



39 Kensington



41 Tyldesley St

Meanwhile, 9 days after the individual bins were last collected, the majority of alleyways are still free of rubbish bags, with no overflowing bins, and just a few bins left out. (Sunday 11th August)



144-146 Acomb St



147-149 Acomb St



142 Acomb St



139 Acomb St

(Meanwhile, 9 days after the individual bins were last collected, the majority of alleyways are still free of rubbish bags, with no overflowing bins, and just a few bins left out. (Sunday 11th August) continued...)



Behind 2 Haydn Ave



8 Maine Rd



2 Playfair St (pavement totally clear but parked car meant camera angle could not show this)

The remaining 6 alleyways, whilst still a mess, are nothing like the scenes we have shown in the communal bin areas, and are improving, as committed residents continue to identify which households are not sticking to the system and helping them to use it.

Petition against communal bins

Appendix 2

Extracts from Council Neighbourhoods Scrutiny Committee minutes

The following extracts from the council committee meetings demonstrate some of the various issues with communal bins. See highlighted areas with our comments in orange text areas. We have mentioned issues that we have seen in other areas in our petition. We suggest these issues are likely to occur were communal bins to be introduced in our area. Our photographic evidence suggests that the council has not yet resolved the issues acknowledged by them, and therefore the communal bin schemes are not successful in this immediate locality owing to the demographics we have here.

Contrary to item 4.9.2 on page 23, our photographs show that the street scene in communal bin areas nearby is appalling. Our photographs show that the street scene in our area, whilst not always perfect, we need help to improve 4 alleyways, is still far better. The introduction of communal bins would mean that we would be powerless to improve the area.

Manchester City Council
Neighbourhoods Scrutiny Committee

Item 8
19 June 2012

- High-rise Properties;
- Work with Students;

4.2 Prioritisation of Recycling

4.2.1 To prioritise recycling services over residual services, the frequency of the food and green service has been made weekly, with alternative weekly twin-stream dry recycling and alternative weekly residual waste collections. This service standard has been achieved with all low rise properties, with the exception of those using the [redacted] work continues with high-rise properties to

Service changes resulted in increased flytipping. It is likely that a change to communal bins will lead to reduced bin capacity when communal bins are filled by house clearances. Thus flytipping will increase.

idual waste collection was preceded with a [redacted] bin per household policy unless the [redacted] the bin snatch activity 22,675 unauthorised [redacted] be broken down for spare components or [redacted] remainder were recycled.

4.3.1 There has been an increase in flytipping since June 2011 that coincided with the waste and recycling service changes. A range of factors are likely to have been responsible for the increase including the limit on residual waste due to service prioritization; the introduction of a no side waste policy; charging for more than two bulky refuse requests and fewer neighbourhood operatives collecting fly tipped material.

This represents a 32.4% saving from two 'last bag' replacement process will see s

4.9 Introduction of Communal Containers

4.9.1 12,000 properties are now being in Moss Side, Longsight, Gorton North, Rusholme. Follow-up monitoring has be

4.9.2 This area of the service changes did generate some negative PR during the implementation. There is still further work to do in some areas, but the overall sense from residents, Members and officers is that this has dramatically improved the street scene.

4.9.3 Some of the issues identified during the monitoring period include:

- Some residents are not recycling, which results in the residual waste containers being overused and consequently, side waste being left.
- Some residents not checking to see if the residual waste containers still have capacity before leaving side waste.
- 29 communal sites require additional capacity due to a concentration of higher than average occupation levels – these are in specific locations¹. Work is underway to increase capacity in some areas.
- Commercial abuse of Communal Containers in alleyways that are shared with shops / businesses.
- High tenant turnover in areas around the city particularly of private rented housing, means that there is almost a constant demand to educate people on how to use the service.

4.10 Joint Passageway

4.10.1 In November 2011, Enterprise Manchester Enterprise Manchester passageway refuse co

4.10.2 The revised me operatives and achieved thorough cleanse of the arrangement was rolled effective and efficient passageways are not

4.10.3 A number of options to normalise this approach were considered and following negotiations with the Unions the scope of the service has been added to the Enterprise Manchester Domestic Collections Contract with the neighbourhood operatives returning back to depots to fill existing vacancies within the operational teams.

¹ Capital Bid for this item has been approved at Gateway 5.

The street scene around communal bin areas in streets nearby, with similar demographics to here, are appalling and far worse than the individual bin areas nearby.

Lack of recycling means insufficient residual waste capacity resulting in large amounts of side waste.
Some individuals leaving side waste when bins not yet full.
High occupation levels (as in our area many HMOs/shared houses).
High turnover is problematic..

advised that further work would take place through a tailored project in September 2013. The Executive Member for Environment also advised that, to build on this, a project was under way with the British Heart Foundation to enable students to donate clothes and certain other unwanted items before they left the city. Turning to the number of schools engaged in recycling food waste, he advised that the vast majority of those under the local authority's control (148 out of 180) were involved. With regard to the availability of recycling rates on the web, the Executive Member for Environment advised that ward level figures could be accessed through the 'My Area' facility on the website.

The Committee then discussed the issue of contaminated bins which resulted from residents incorrectly placing items for disposal/collection in plastic bags in a bin which would subsequently be rejected by the crews and would then require removal on a separate collection. Members emphasised the need to raise awareness amongst residents to address this and reduce avoidable, additional costs. They also asked for the collection costs associated with the removal of contaminated bins. The Strategic Area Manager acknowledged that this to be a nationwide issue but that communication would be reviewed.



The Committee then went on to discuss the issue of 'contaminated bins' which resulted from residents incorrectly placing items for disposal/collection in plastic bags in a bin which would subsequently be rejected by the crews and would then require removal on a separate collection. Members emphasised the need to raise awareness amongst residents to address this and reduce avoidable, additional costs. They also asked for the collection costs associated with the removal of contaminated bins. The Strategic Area Manager acknowledged that this to be a nationwide issue but that communication would be reviewed.

Incorrect use/contamination of recycling bins occurs. In a communal bin area responsible residents cannot control irresponsible residents and thus contamination more likely.

...lid' when ns in aller es of n the ers blic realm had a detrimental impact on the desirability of a neighbourhood and that some responsible residents may perceive themselves as penalised for the non-compliance of others. More information on the impact on local communities was requested in the next update The Strategic Area Manager agreed to provide this. The Assistant Chief Executive (Neighbourhood Strategy and Delivery) advised that there were other authorities across Greater Manchester who had successfully implemented smaller bins and had achieved greater recycling rates in comparison. He added that studies had shown that Manchester could achieve further progress in its recycling rates. The Strategic Area Manager offered to bring back a further report which fully set out the detail and context of the proposals. The Committee agreed to this. A member also suggested that the Committee should receive further information on the options available at the end of the current domestic contract. The Committee agreed to this.

Members stressed the importance of working with local communities to educate them on how to recycle effectively and stimulate increased recycling activity. A member presented a local example of where communal recycling was not operating effectively. He suggested engaging with local religious leaders as a potential way to explore all possible routes to raise awareness. The Executive Member for Environment said that this was already taking place but would be extended. Discussions then turned to the proportion of residents who consistently refused to participate responsibly in waste and recycling activity. The Executive Member for Environment acknowledged this as an issue not solely confined to Manchester and advised that further work had been developed in conjunction with Registered

location of kerbside recycling collection is to be identified and implemented. This work will be supported by a focus on increasing recycling in high rise properties (as well as in predominantly student areas) through the corporate behaviour change programme. A report to Executive in February outlined that behaviour change was fundamental to achieving the significant shift needed to realise benefits such as improved recycling.

4.2 Unauthorised Black Bin Removal

From April Enterprise Manchester commenced removing unauthorised black bins beginning in the North, East and Central SRF areas. This action will last for 5-6 weeks then the 2 crews will move to the South of the City. An additional week has been added to wash and return some of the collected bins to Registered Provider partners for use on void properties. Collection crews are working in advance of the bin collection to accurately identify all the unauthorised second black bins. The contact centre is aware of this work and will ensure that if residents have a genuine case that they require an additional black bin, then one will be returned free of the replacement charge.

It is planned that further work will be undertaken in terraced areas to identify locations that have either too many or too few black bins once the large communal containers are installed.

4.3 Large Containers

Up to 7,500 households have been identified as living in areas where the large communal containers could be introduced. Data from existing residual, recycling services, incidents of bin fires, in-cab collection crew information, land title detail and NDT compliance officer knowledge are being collated around each proposed location to determine the likely effectiveness of their introduction. The decision whether to leave the service as-is; implement the hybrid (large residual containers and twin bin recycling) service; or implement the standard large container service for residual and recycling, will be taken in conjunction with local members using this analysis.

Site surveys will be undertaken in parallel with the procurement preparation. Surveys are scheduled to be completed by the end of June. At this stage it is anticipated that decisions will be taken and the sites will be installed from July onwards.

4.4 Fortnightly Organic Collection

Between October and March (exact dates to be confirmed) collection will be changed to fortnightly. This will allow for a more consistent service through the collection contract. This will be done in conjunction with the black bin collection and recycling. The kerbside caddy will be able to require a bin in.

Decisions will be made on area, by area basis. The residents in our area strongly demonstrate that communal bins will create problems here and locals are already working to improve the area by more suitable means.

4.5 Weekly Recycling Pilot